

Philippines Structural GIS and SEEBASE™ Study

The Philippines Structural GIS and SEEBASE™ Study provides an up-to-date geological study in which basement and basin evolution has been analyzed at country scale.

The Philippines Structural GIS and SEEBASE™ Study is a cost-effective regional evaluation tool that gives a first-pass perspective on the petroleum geology of this complex area. It provides a basis for focusing future exploration and data acquisition strategies, reducing exploration risk and petroleum system analysis.

The study incorporates all publicly available knowledge including regional tectonic syntheses, potential field datasets, geological maps and wells. It can be updated with more detailed assessment of individual basins with the addition of geophysical datasets and/or additional calibration data.

This study benefits from state-of-the-art geophysical processing of public domain gravity and magnetic data, including several FrOG Tech proprietary enhancements, in addition to a suite of standard filters.

Results are presented in A3 atlas-style reports accompanied by ArcGIS projects containing interpretation layers as well as the processed and enhanced potential field datasets (grids and images)

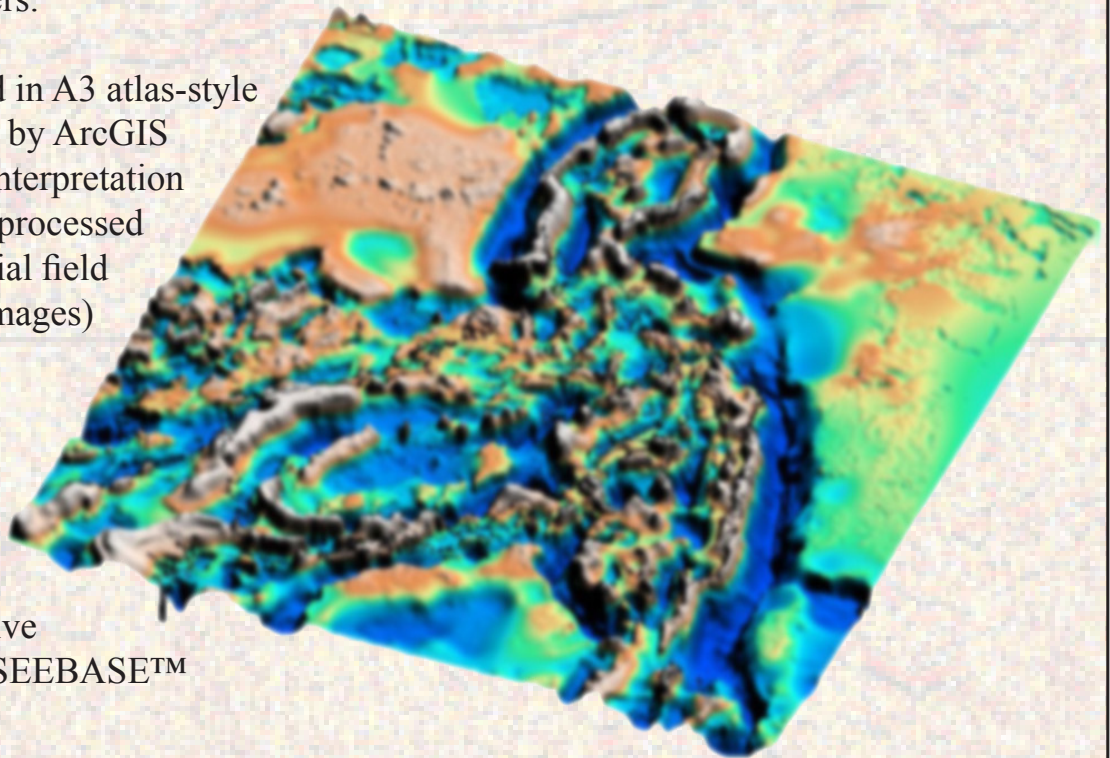


Image:
Blurred 3D perspective
view of Philippines SEEBASE™

